

FLOW INDICATOR Carbon Steel, Flanged

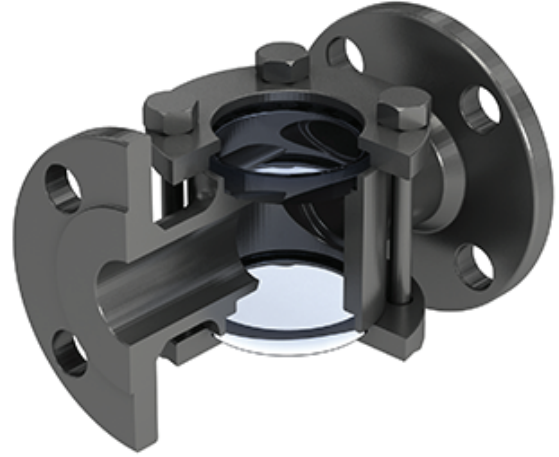
Carbon Steel PN16 V-MFI-03-04F PN40 V-MFI-03-07F

Design

Size : DN15 - DN125 EN558-1 / F1
 DN150 - DN200 EN558-1 / F5
 Connection : EN 1092-1
 Actuator Connection : ISO 5211

Technical Features

Working Pressure : PN16, PN40
 Working Temperature : -30°C / +180°C
 Usage : Special imported glass will be used for high temperature.



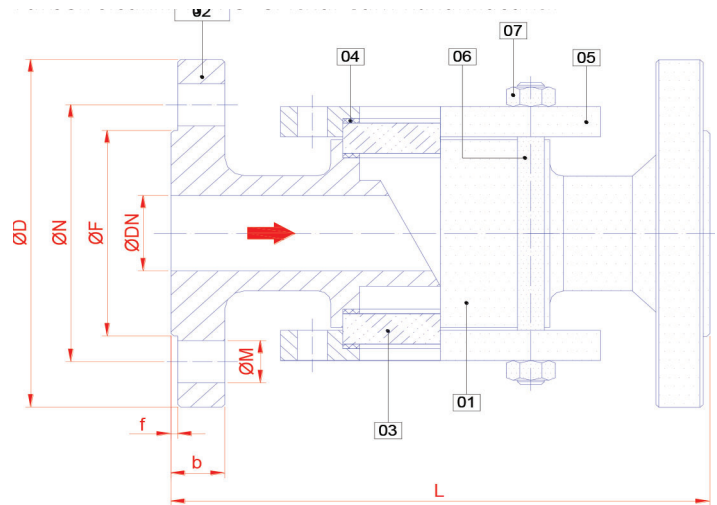
Certificate

CE0408, TS EN 10204 3.1, ISO 9001:2015, SIL3

Application

Hot water, cold water, compressed air, fuel oil, ceramic etc.

| NO | PART NAME | CARBON STEEL |
|----|--------------|--------------------------|
| 1 | BODY | CARBON STEEL |
| 2 | CAP | CARBON STEEL |
| 3 | GLASS | TEMPERLED SECURITY GLASS |
| 4 | SEALING | PTFE |
| 5 | GLASS FLANGE | STEEL |
| 6 | STUDS | STEEL |
| 7 | NUT | STEEL |



| TYPE | CONNECTION SIZE PN 16 | | | | | | | | CONNECTION SIZE PN 40 | | | | | | |
|-------------------------|-----------------------|-----|---|-----|----|-----|----|-----|-----------------------|-----|----|-----|----|-----|----|
| | DN | L | f | D | b | N | M | F | MN | D | b | N | M | F | MN |
| FLOW INDICATOR, FLANGED | DN 15 | 130 | 2 | 95 | 14 | 65 | 14 | 45 | 4 | 95 | 16 | 65 | 14 | 67 | 4 |
| | DN 20 | 150 | 2 | 105 | 16 | 75 | 14 | 58 | 4 | 105 | 18 | 75 | 14 | 83 | 4 |
| | DN 25 | 160 | 2 | 115 | 16 | 85 | 14 | 68 | 4 | 115 | 18 | 85 | 14 | 89 | 4 |
| | DN 32 | 180 | 2 | 140 | 16 | 100 | 18 | 78 | 4 | 140 | 18 | 100 | 18 | 98 | 4 |
| | DN 40 | 200 | 2 | 150 | 16 | 110 | 18 | 88 | 4 | 150 | 18 | 110 | 18 | 114 | 4 |
| | DN 50 | 230 | 2 | 165 | 18 | 125 | 18 | 102 | 4 | 165 | 20 | 125 | 18 | 127 | 4 |
| | DN 65 | 290 | 3 | 185 | 18 | 145 | 18 | 122 | 4 | 185 | 22 | 145 | 18 | 149 | 8 |
| | DN 80 | 310 | 3 | 200 | 20 | 160 | 18 | 138 | 8 | 200 | 24 | 160 | 18 | 168 | 8 |
| | DN 100 | 350 | 3 | 220 | 20 | 180 | 18 | 158 | 8 | 235 | 24 | 190 | 22 | 200 | 8 |
| | DN 125 | 400 | 3 | 250 | 22 | 210 | 18 | 188 | 8 | 270 | 26 | 220 | 26 | 235 | 8 |
| | DN 150 | 350 | 3 | 285 | 22 | 240 | 22 | 211 | 8 | 300 | 28 | 250 | 26 | 270 | 8 |
| | DN 200 | 400 | 3 | 340 | 22 | 210 | 18 | 188 | 8 | 375 | 34 | 320 | 30 | 330 | 12 |